



#103-701 Cynthia St, Saskatoon, SK

FOR LEASE OFFICE/RETAIL

Available Space:

Bay 103 Office/Retail 2,026 SF - Possession September 1st

IL1 Zoning

Parcels 118931205, 144882894

Agents Protected

Occupancy Costs \$6.00/SF (est)

NET LEASE RATE:
\$10.00 SF

Richard Brindley

O: +1 (306) 665-1416 ext 1184

C: +1 (306) 250-9727

E: richard@reddeeproperties.com

www.reddeeproperties.com

Building Features

- Turn Key Professional Office
- Glass store front
- Large amount of natural light
- Impressive Showroom
- 1 - 13'x13' Professional Office
- Overhead Door and Warehouse space
- Signage Available

Location

- 65,000 daily traffic volume at Avenue C and Circle Drive
- Ample on site Parking
- Easy access to Circle Drive, 51st St and Idylwyld Drive



REDDEE
PROPERTIES INC.

815 Circle Drive E.
Saskatoon, SK S7K 3S4

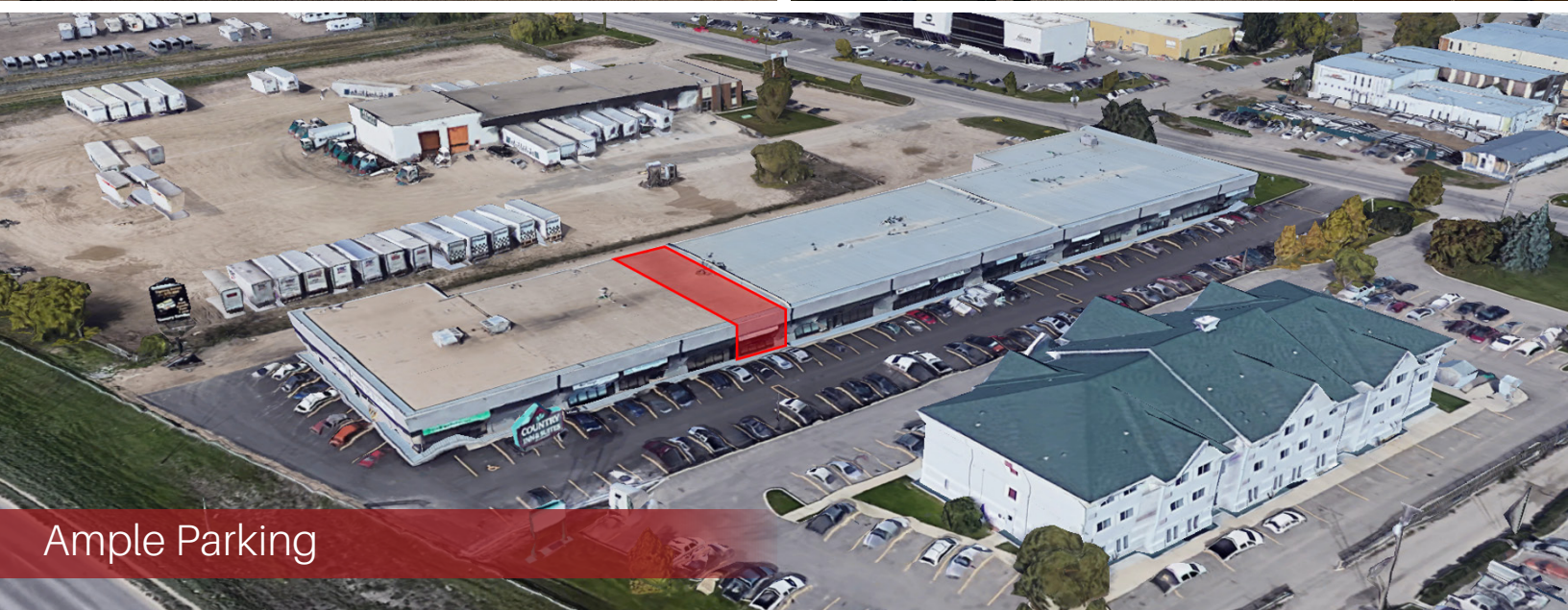
FOR LEASE | #103-701 Cynthia St, Saskatoon



Large Showroom



Glass Store Front



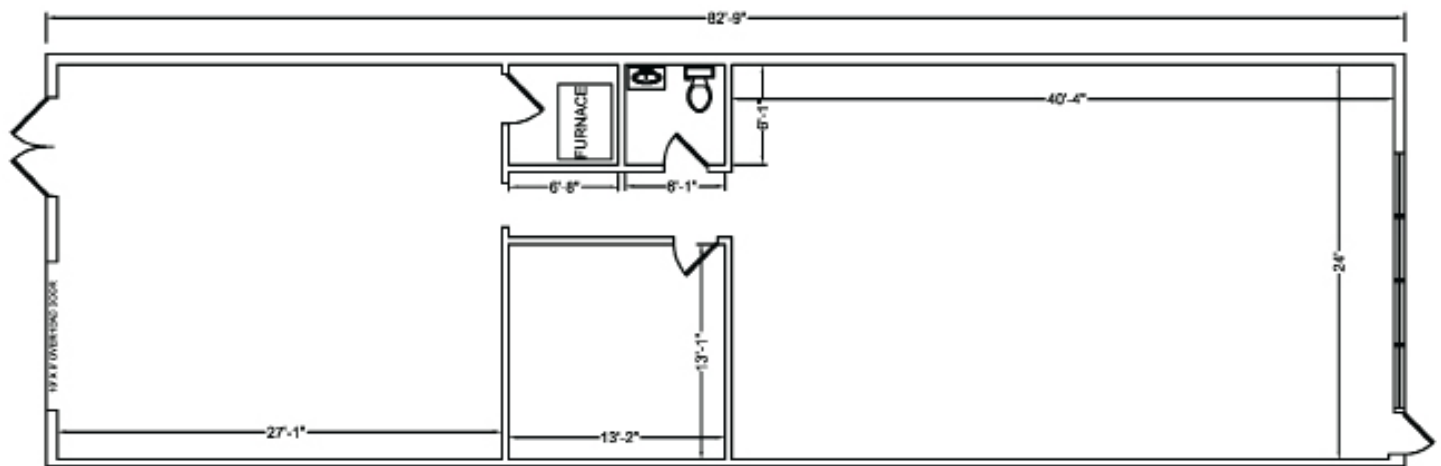
Ample Parking



Versatile Warehouse



Overhead door



SEE MORE AT:
www.reddeeproperties.com/leasing

Richard Brindley
 O: +1 (306) 665-1416 ext 1184
 C: +1 (306) 250-9727
 E: richard@reddeeproperties.com
www.reddeeproperties.com
 815 Circle Drive E.
 Saskatoon, SK S7K 3S4



REDDEE
 PROPERTIES INC.