



122, 21st St East, Saskatoon

FOR LEASE DOWNTOWN RETAIL

Available Space:
2,373 SF

Available Immediately

B6 Downtown Commercial
Legal Description: Surface Parcel 136261278
Agents Protected
Occupancy Costs \$10.50/SF (est)

NET LEASE RATE: \$30.00 SF

Richard Brindley
O: +1 (306) 665-1416 ext 1184
C: +1 (306) 250-9727
E: richard@reddeeproperties.com
www.reddeeproperties.com

Building Features:

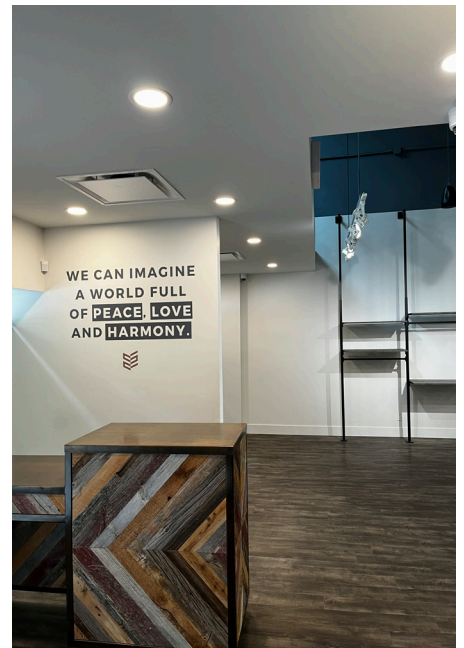
- Turn key retail space
- Full glass frontage for maximum exposure
- Prime location for foot traffic
- Full-time building operator
- 500 sf extra mezzanine
- On-site parking available
- Open floor plan, option to customize
- Possible option to demise into smaller bay



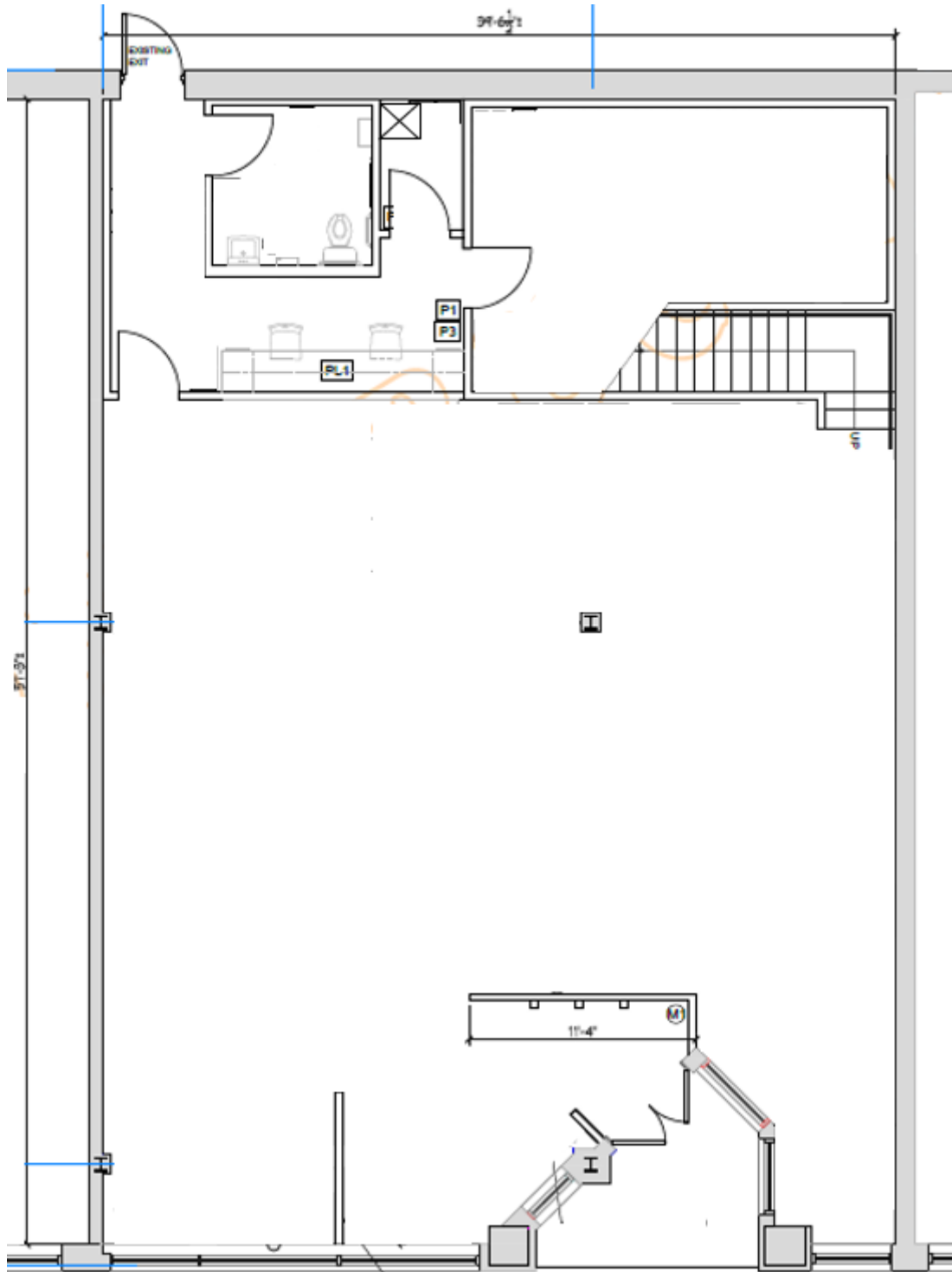
REDDEE
PROPERTIES INC.

815 Circle Drive E.
Saskatoon, SK S7K 3S4

FOR LEASE | 122 21st St East, Saskatoon



FOR LEASE | 122 21st St East, Saskatoon





SEE MORE AT:
www.reddeproperties.com/leasing

New Office Location at:
216, 1st Ave S (3rd Floor)
Saskatoon, SK S7K 1K3

Richard Brindley
O: +1 (306) 665-1416 ext 1184
C: +1 (306) 250-9727
E: richard@reddeproperties.com
www.reddeproperties.com



REDDEE
PROPERTIES INC.

815 Circle Drive E.
Saskatoon, SK S7K 3S4