



122, 21st St East, Saskatoon, SK

## FOR LEASE DOWNTOWN RETAIL

**Available Space:**  
2,373 SF

Available Immediately

B6 Downtown Commercial  
Legal Description: Surface Parcel 136261278  
**Agents Protected**  
Occupancy Costs \$10.50/SF (est)

# NET LEASE RATE: \$30.00 SF

**Richard Brindley**  
O: +1 (306) 665-1416 ext 1184  
C: +1 (306) 250-9727  
E: richard@reddeeproperties.com  
www.reddeeproperties.com

### Building Features:

- Turn key retail space
- Full glass frontage for maximum exposure
- Prime location for foot traffic
- Full-time building operator
- 500 sf extra mezzanine
- On-site parking available
- Open floor plan, option to customize
- Possible option to demise into smaller bay



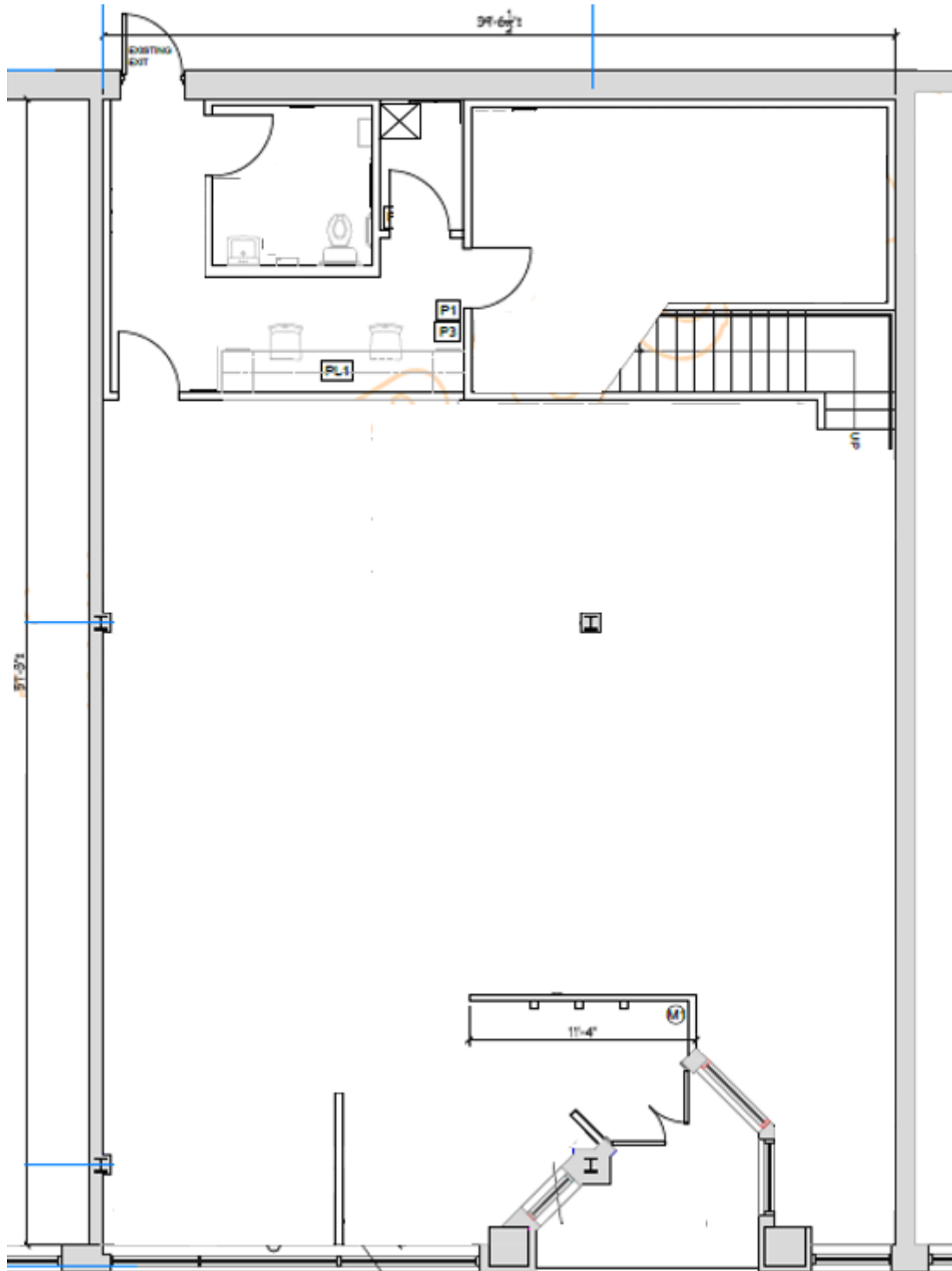
**REDDEE**  
PROPERTIES INC.

815 Circle Drive E.  
Saskatoon, SK S7K 3S4

FOR LEASE | 122 21st St East, Saskatoon, SK



FOR LEASE | 122 21st St East, Saskatoon, SK





**SEE MORE AT:**  
[www.reddeeproperties.com/leasing](http://www.reddeeproperties.com/leasing)

***New Office Location at:***  
216, 1st Ave S (3rd Floor)  
Saskatoon, SK S7K 1K3

**Richard Brindley**  
O: +1 (306) 665-1416 ext 1184  
C: +1 (306) 250-9727  
E: [richard@reddeeproperties.com](mailto:richard@reddeeproperties.com)  
[www.reddeeproperties.com](http://www.reddeeproperties.com)



**REDDEE**  
PROPERTIES INC.

815 Circle Drive E.  
Saskatoon, SK S7K 3S4