



1764 Kelly Douglas Road, Kamloops, BC

# FOR LEASE

## INDUSTRIAL YARD

**Available Space:**  
1.40 Acres

**Zoning:** Light Industrial (I1) Zoning  
**Legal Description:** Plan 9090 Ltd B DL 235

NET LEASE RATE:  
**\$ 1.25 / SF**

+ NNN

**Tyson Lewis**  
O: +1 (306) 665-1416 ext 1198  
C: +1 (403) 615-6659  
E: tyson@reddeeproperties.com  
www.reddeeproperties.com

### Land Features:

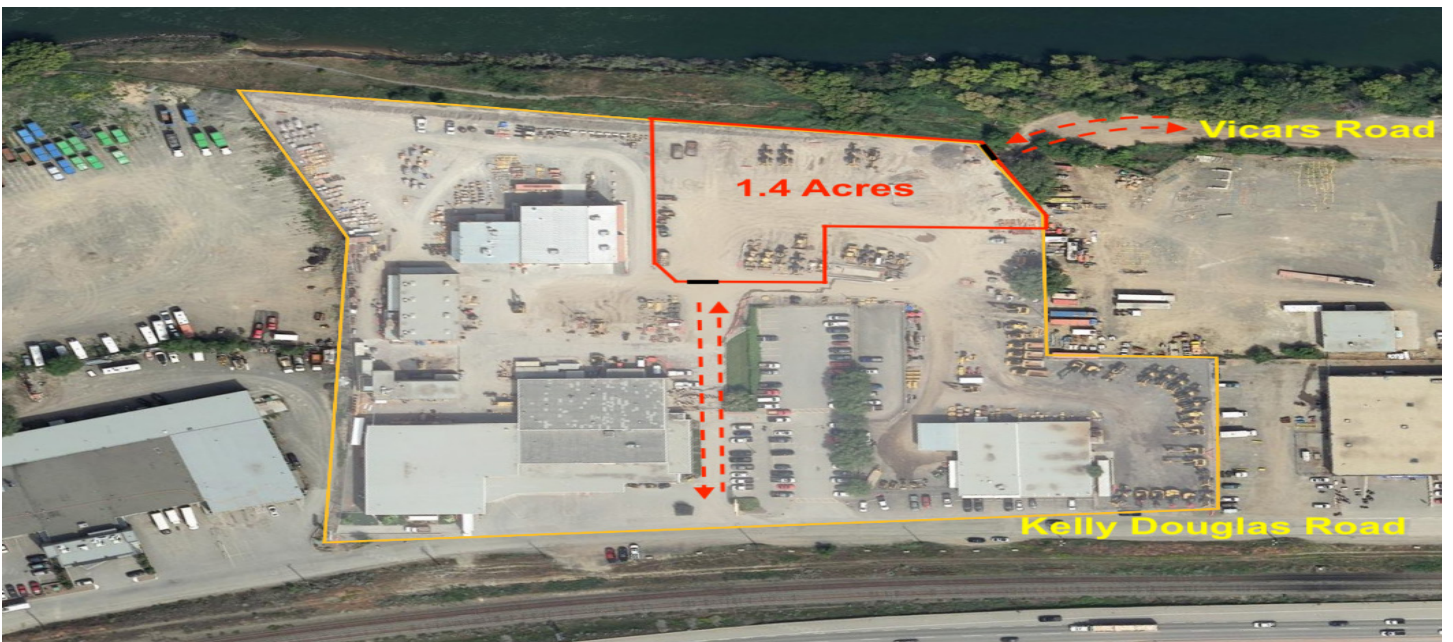
- ▶ Large, level 1.40 Acre industrial yard
- ▶ Fully fenced with two 24' wide gates
- ▶ Direct access to TransCanada Highway
- ▶ Yard can be further demised into two smaller parcels
- ▶ Option for second ingress/egress point off Westoby Rd.
- ▶ Centralized location, 3 minutes to downtown Kamloops



**REDDEE**  
PROPERTIES INC.

815 Circle Drive E.  
Saskatoon, SK S7K 3S4

FOR LEASE | 1764 Kelly Douglas Drive, Kamloops, BC





**SEE MORE AT:**

[www.reddeeproperties.com/leasing](http://www.reddeeproperties.com/leasing)

**Tyson Lewis**

O: +1 (306) 665-1416 ext 1198

C: +1 (403) 615-6659

E: [tyson@reddeeproperties.com](mailto:tyson@reddeeproperties.com)

[www.reddeeproperties.com](http://www.reddeeproperties.com)



**REDDEE**  
PROPERTIES INC.

815 Circle Drive E.  
Saskatoon, SK S7K 3S4