



150, 1st Avenue South, Saskatoon

## FOR LEASE DOWNTOWN OFFICE/RETAIL

**Available Space:**  
3,000 SF

Available Immediately

B6 Downtown Commercial  
Legal Description: Lot 6, Block 148, Plan (Q2) C195  
**Agents Protected**  
Occupancy Costs \$7.00/SF (est)

## NET LEASE RATE: \$25.00 SF

**Richard Brindley**  
O: +1 (306) 665-1416 ext 1184  
C: +1 (306) 250-9727  
E: richard@reddeeproperties.com  
www.reddeeproperties.com

### Building Features:

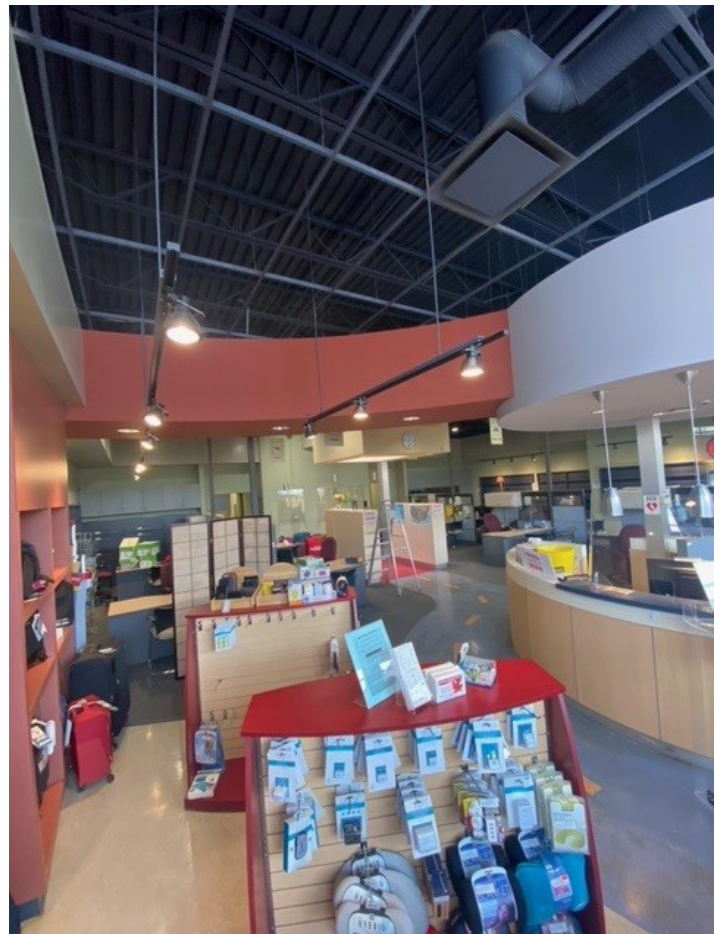
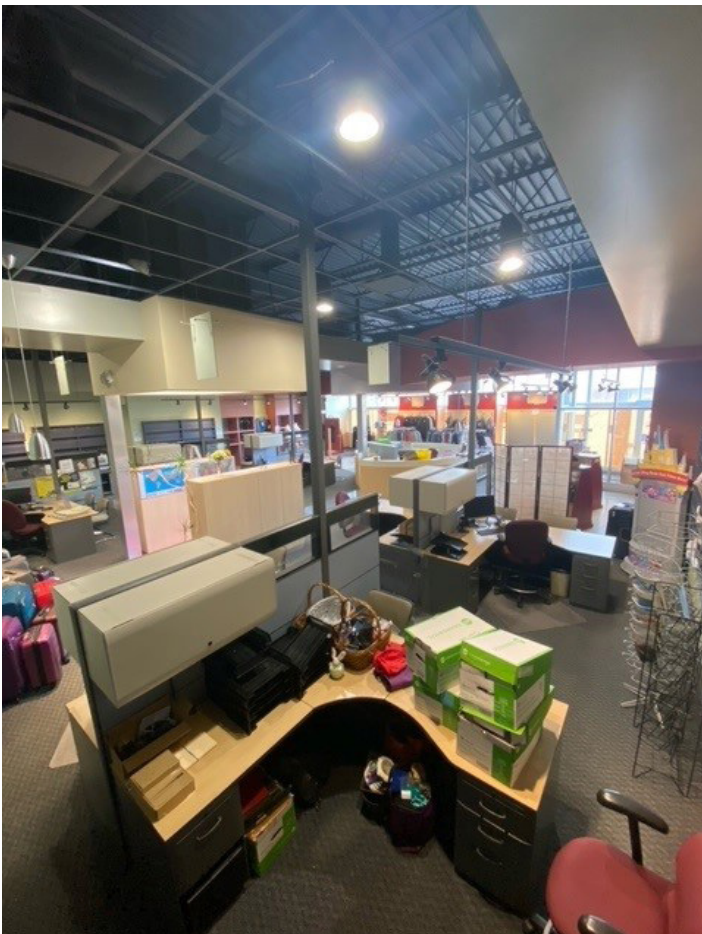
- Ready to use retail or office space
- Full glass frontage for maximum exposure
- Prime location for foot traffic and parking
- Full-time building operator
- Directly opposite Midtown Plaza
- On-site parking available
- Open floor plan, option to customize
- Landlord will modify space for Tenant if required



**REDDEE**  
PROPERTIES INC.

815 Circle Drive E.  
Saskatoon, SK S7K 3S4

FOR LEASE | 150, 1st Avenue South, Saskatoon





**SEE MORE AT:**  
[www.reddeproperties.com/leasing](http://www.reddeproperties.com/leasing)

***New Office Location at:***  
216, 1st Ave S (4th Floor)  
Saskatoon, SK S7K 1K3

**Richard Brindley**  
O: +1 (306) 665-1416 ext 1184  
C: +1 (306) 250-9727  
E: [richard@reddeproperties.com](mailto:richard@reddeproperties.com)  
[www.reddeproperties.com](http://www.reddeproperties.com)



**REDDEE**  
PROPERTIES INC.

815 Circle Drive E.  
Saskatoon, SK S7K 3S4